

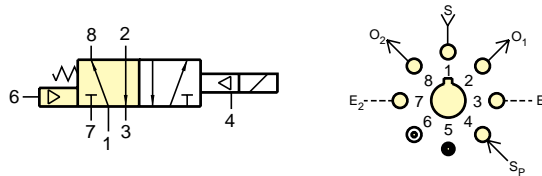


# ET PILOTED 4-WAY VALVES

## R-481



For more information please see page 286 in the Modular Valve section of this catalog.



**Note:** Supply pressure must be applied to both ports 1 & 4. Minimum pressure on port 4 should be 40 psig.

**Type:** 4-way combination electronic and modular spool type interface valve. Fully ported ET-3 & R401 hybrid

**Medium:** Air, water, or oil; pilot - air only

**Input Pressure:** Pilot - 45 psig minimum  
Working - 0-150 psig

**Air Flow:** Valve - 10 scfm @ 100 psig

**Voltages:** R-481-6 6 VDC  
R-481-12 12 VDC  
R-481-24 24 VDC

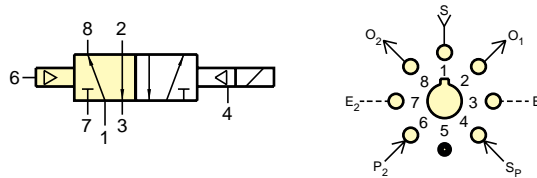
**Mounting:** Uses Octoport base and two captivated screws

**Ports:** Valve has patented Octoport system

## R-482



For more information please see page 286 in the Modular Valve section of this catalog.



**Note:** Supply pressure must be applied to both ports 1 & 4. Minimum pressure on port 4 should be 40 psig.

**Type:** 4-way combination electronic and modular spool type interface valve. Fully ported ET-3 & R402 hybrid

**Medium:** Air, water, or oil; pilot - air only

**Input Pressure:** Pilot - 45 psig minimum  
Working - 0 to 150 psig

**Air Flow:** Valve - 10 scfm @ 100 psig

**Voltages:** R-482-6 6 VDC  
R-482-12 12 VDC  
R-482-24 24 VDC

**Mounting:** Uses Octoport base and two captivated screws

**Ports:** Valve has patented Octoport system

## ET-C48 ET-C120

Black molded lug connectors are available for easy push on connection ET-C48 is 48" in length, ET-C120 is 120" in length

### ET Valve Connectors



## 3831

Insulated crimp-on spade lug connectors are available for wiring up leads for connecting electronic circuit to ET style valves. Accepts #22, #24, or #26 wire



## C2-RB18 C2-RB120

AMP connector #103959-1 with 18" or 120" wire leads for EC/ECO and E/EIO valves

### EC & EI Valve Connectors

